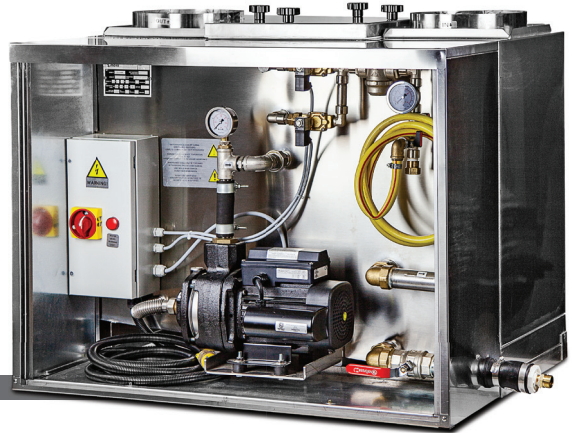


(844) GO SMOKI (Toll-free in USA)  
 (844) 467-6654 | E: info@smokiusa.com

www.smokiusa.com

# SMOKE ZAPPER 250



**Description:** Unit shall be factory assembled solid fuel pollution control unit for connection to a direct-connected wood fired oven or smoker. Unit is capable of significantly reducing smoke, grease, and odor from the exhaust air stream.

**Certifications:** Unit shall be listed by UL LLC with file number MH60726 and conform to UL1978 Standards.

**Housing:** The Smoke Zapper housing shall be constructed of 300 and 400 series stainless steel. All metal in contact with the air-stream shall be constructed of 304 and 340 series stainless steel. Internal and external seams shall be continuously welded. The filter access door shall be lined with high temperature silicon gasket capable of withstanding the UL1978 abnormal temperature test at 2000°F. The Smoke Zapper housing shall be rated for exterior and interior installation.

**Cabinet:** The cabinet shall be constructed of 304 series stainless steel and shall be waterproof. The cabinet shall provide access to the water recycle tank access door, electrical connection box, fresh water intake, water drain system, and water pressure gauges.

**Nozzle Array Section:** The nozzle array shall feature a bank of high-pressure steel water nozzles which spray in the exhaust flow direction. The nozzle array section shall provide pressurized recycled water via the internal pump system. The nozzle array section shall not require regular maintenance.

**PHYSICAL FEATURES**

*Total Dimensions:* W x D x H: 38.5" x 28.75" x 31.5"  
*Weight (Empty):* 200 lbs  
*Operational Weight:* 354 lbs  
*Water Tank Capacity:* 18.5 gallons  
*Operational Temperature:* 14°F to 120°F  
*Chimney Connection:* 10" diameter

**ELECTRICAL FEATURES**

*Rated Voltage:* 1 Phase x 115V  
*Frequency:* 60 Hz  
*Current:* 14.6 A  
*Motor Power:* 1.5 HP

**PLUMBING REQUIREMENTS**

*Water Consumption:* 9 gallons/hr  
*Wastewater Drain Connection:* 1.5" diameter to grease trap  
*Fresh Water Connection:* 0.5" cold tap line

**VENTILATION CHARACTERISTICS**

*Maximum Air Flow:* 400 cfm  
*Static Pressure:* 0.2 H<sub>2</sub>O

**MINIMUM REQUIRED MAINTENANCE SPACE**

*Above Unit:* 24"  
*Unit Front:* 36"  
*Unit Back:* 18"\*  
*Unit Side:* 18"\*

\* 18" to combustibles per NFPA 96 - Clause 4.2.3 - 0" to non-combustible

**USA HEADQUARTERS** 601 N Main St.  
 Brewster, NY 10509

One-year conditional warranty on unit and parts. Smoki USA reserves the right to change design or specifications without notice.

Doc#: SZ250-070318 | Revised Summer 2018.

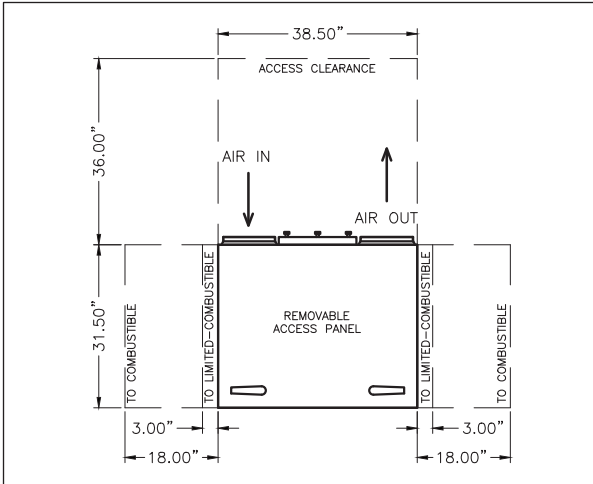
UL 1978  
 File#: MH60726



(844) GO SMOKI (Toll-free in USA)  
(844) 467-6654 | E: info@smokiusa.com

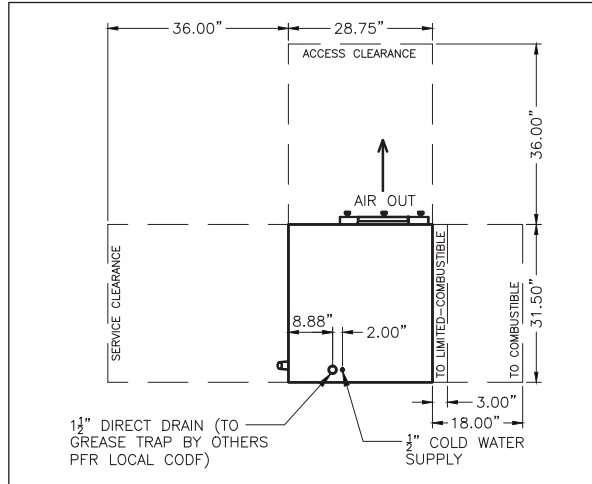
www.smokiusa.com

# SMOKE ZAPPER 250



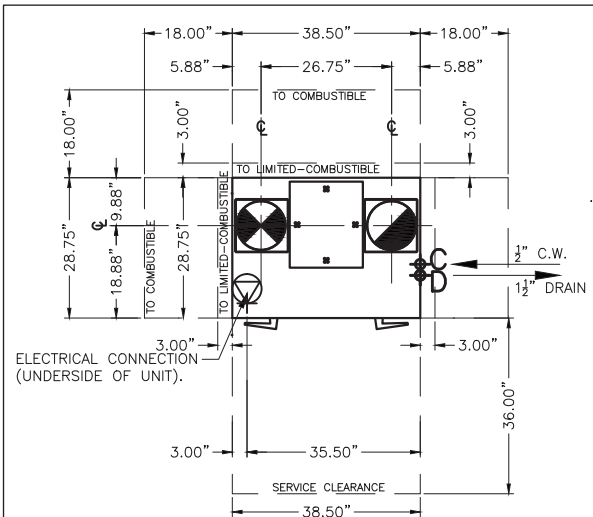
FRONT ELEVATION

SCALE :  $\frac{3}{4}$ " = 1'-0"



RIGHT ELEVATION

SCALE :  $\frac{3}{4}$ " = 1'-0"



PLAN

SCALE :  $\frac{3}{4}$ " = 1'-0"

**USA HEADQUARTERS**

601 N Main St.  
Brewster, NY 10509

One-year conditional warranty on unit and parts.  
Smoki USA reserves the right to change design or specifications without notice.

Doc#: SZ250-070318 | Revised Summer 2018.

UL 1978  
File#: MH60726

